

Return to:
 DVFA-2009 EMS Conference
 P.O. Box 1849
 Dover, DE 19903-1849
DEADLINE 8/14/09

2009 DVFA Conference
Delaware State Ambulance Association EMS Continuing Education

GENERAL SESSION REGISTRATION FORM

\$65.00 IN STATE \$75.00 OUT OF STATE (per person, per day)
 FEES MUST ACCOMPANY REGISTRATION FORM

Department/ Agency _____ Station # _____	Contact Person _____ Phone # _____ E-mail _____
---	---

Last Name	First Name	DE EMT-B #	Check all dates attending		
			Mon 9/14	Tue 9/15	Wed 9/16
TOTAL AMOUNT ENCLOSED					

DVFA Office Use Only		
Date Received	Check Number	Check Amount

Registration Due AUGUST 14, 2009

Return to:
 DVFA-2009 EMS Conference
 P.O. Box 1849
 Dover, DE 19903-1849
DEADLINE 8/14/09

**2009 DVFA Conference
 Delaware State Ambulance Association EMS Continuing Education**

BEYOND THE BASICS SEMINAR REGISTRATION FORM

Class Limit 100 Must Attend Both Days

\$130.00 IN STATE \$170.00 OUT OF STATE (per person)

FEES MUST ACCOMPANY REGISTRATION FORM

Department/ Agency _____ Station # _____	Contact Person _____ Phone # _____ E-mail _____
---	---

Last Name	First Name	DE EMT-B #
TOTAL AMOUNT ENCLOSED		

DVFA Office Use Only

Date Received	Check Number	Check Amount
----------------------	---------------------	---------------------

Registration Due AUGUST 14, 2009

Return to:
 DVFA-2009 EMS Conference
 P.O. Box 1849
 Dover, DE 19903-1849
DEADLINE 8/14/09

2009 DVFA Conference
Delaware State Ambulance Association EMS Continuing Education

FIRE/EMS INSTRUCTOR'S CONFERENCE REGISTRATION FORM

Class Limit of 100

\$100.00 Day 1 \$150.00 Both Days (per person)
FEES MUST ACCOMPANY REGISTRATION FORM

Department/ Agency _____ Station # _____	Contact Person _____ Phone # _____ E-mail _____
---	---

Last Name	First Name	DE EMT-B #	9/12	9/13
TOTAL AMOUNT ENCLOSED				

DVFA Office Use Only

Date Received	Check Number	Check Amount
----------------------	---------------------	---------------------

Registration Due AUGUST 14, 2009

Return to:
 DVFA-2009 EMS Conference
 P.O. Box 1849
 Dover, DE 19903-1849
DEADLINE 8/14/09

2009 DVFA Conference
Delaware State Ambulance Association EMS Continuing Education

EMERGENCY PEDIATRIC CLASS REGISTRATION FORM

Class Limit 40

\$ 65.00 IN STATE \$ 75.00 OUT OF STATE (per person, per day)
FEES MUST ACCOMPANY REGISTRATION FORM

Department/ Agency _____ Station # _____	Contact Person _____ Phone # _____ E-mail _____
---	---

Last Name	First Name	DE EMT-B #
TOTAL AMOUNT ENCLOSED		

DVFA Office Use Only		
Date Received	Check Number	Check Amount

Registration Due AUGUST 14, 2009



DVFA CONFERENCE 2009
Delaware Volunteer Firemen's Association/Delaware State Ambulance Association
CONTINUING EDUCATION



Saturday & Sunday (9/12 & 9/13)
Classes are held at DSFS – Lunch Provided
Registration Starts @ 8 AM Class Starts @ 9 AM

Beyond the Basics – Must attend both days!!

Instructor's Conference – You may attend one day or both days!!

SAT 9/12 @ DSFS	SUN 9/13 @ DSFS
1. Instructor's Conference (Day 1) – Heather Davis & David Page, Class limit 100 2. Beyond the Basics (Day 1)- Dan Limmer, Will Krost & Joe Mistovich Class limit 100	1. Instructor's Conference (Day 2 <u>optional</u>) 2. Beyond the Basics (Day 2) 3. Emergency Pediatric Care (EPC) NAEMT Course- Bob Waddell, Dave Aber and other instructors (Sun. Only) Class limit 40

Monday – Wednesday (9/14, 9/15, 9/16)
Classes are held at the Sheraton in Dover, DE
Registration Starts @ 7 AM
General Announcements at 8:00 with classes starting at 8:15 Sharp!!
All lunches held daily in the Main Ballroom from 12:30-1:30
Monday 9/14

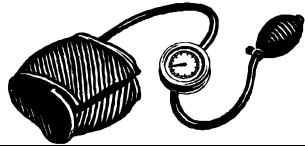
Main Ballroom Classes all day	Breakout Sessions
1. Domestic Violence & Child Abuse – Michelle Warch 8:15-9:30 2. Deadly Hip Injuries – Heather Davis 9:45-11:00 3. I Can't Catch My Breath – David Paige 11:15-12:30 4. Issues Within the Delaware EMS System – Various 1:30-2:45 5. Evidence Based Disaster Triage (Increasing Survivability Without Playing God) – Bob Waddell 3:00-4:15	1st Session 9:45-11:00 A. Case Studies in Traumatic Death – Daniel Limmer B. Not just Boo-boos and Band-Aids (Field Assessment & Stabilization of the Pediatric Trauma Patient) – Will Krost C. Diabetic Emergencies (Assessment & Management Strategies – Joe Mistovich 2nd Session 11:15-12:30 A. Burns-“Too Hot to Handle” - Ken Bouvier B. Care & Controversy in Crush Injuries & Compartment Syndromes – Will Krost C. 10 Commandments for EMS Survival – Daniel Limmer 3rd Session 3:00-4:15 A. Trachs, Tubes & Shunts (Technology for Special Needs Children) – Chris Ebright B. Americas School Shootings – Ken Bouvier C. What I Did on My Summer Vacation – Glenn Ludeke



Tuesday 9/15

Main Ballroom classes all day

1. How the National Guard & EMS Would Interface for a Major Medical Event – Capt. Rachel Stephens **8:15-9:30**
2. 12 Lead EKG – Tim Phalen **9:45-11:00**
3. Combat or Care (Scene Safety for Fire & EMS) – Gary Ludwig **11:15-12:30**
4. Helicopter Crash Recovery (Rescuer Safety Enhances Crew Survival) – Carol Faedtke & Lifenet **1:30-2:45**
5. EMS on the Fire Ground – Dr. Ed Dickinson **3:00-4:15**



Breakout Sessions

1st Session 9:45-11:00

- A. Challenging Prehospital Case Studies – Paul Werfel
- B. When the Bough Breaks – Chris Ebright
- C. Shock - Ken Bouvier

2nd Session 11:15-12:30

- A. Fire Ground Rehab – Dr. Ed Dickinson
- B. Capnography – Rob Murray
- C. Baby Not Breathing & Common Medical Emergencies – Bob Waddell

3rd Session 3:00-4:15

- A. Simple Rules of Trauma Assessment – Paul Werfel
- B. What They Did Not Teach You in EMT School – Gary Ludwig
- C. When Your Patient Reaches the Breaking Point – Chris Ebright

Wednesday 9/16

Main Ballroom Classes all day

1. The ABC's of Cardiac Arrest – Bob Sullivan **8:15-9:30**
2. Case Studies of EMS Resuscitation (Tension Pneumothorax, Acute MI, Trauma Patients & CPAP) – Dr. David Jaslow **9:45-11:00**
3. 20 Commandments to Better Patient Assessment – Paul Werfel **11:15-12:30**
4. The Day the Blue Bloater Met the Pink Puffer – Chris Ebright **1:30-2:45**
5. EMS Life in the Ghetto – Dr. Dave Bailey **3:00-4:15**



Breakout Sessions

1st Session 9:45-11:00

- A. The Heart of the Matter – Paul Werfel
- B. Person Shot – Gary Ludwig
- C. Medical Emergency Alphabet Soup – Chris Ebright

2nd Session 11:15-12:30

- A. Suicide Bombers Coming to a Mall Near You – Gary Ludwig
- B. When the Bite is Worse Than the Bark – Chris Ebright
- C. Mars vs. Venus – Differences Between Male & Female – Dr. Steve Parillo

3rd Session 3:00-4:15

- A. Refusals; How to Handle Those Who Don't Want to Go – Dr. David Jaslow
- B. Dysbarism/Decompression Sickness – Dr. Anne Klimke
- C. Less Lethal Weapons – Dr. Ken Lavelle

More information can be found on the following website: www.dvfassn.com

2009 DVFA Conference



Delaware State Ambulance Association EMS/Fire Instructors Educational Workshop

September 12 & 13, 2009 – Delaware State Fire School, Deover, Delaware

Cost is \$100.00 for one day or \$150.00 for both days, lunch provided

All Classes Start at 9:00 and will end by 4:30 - Registration limited to 100 participants

Come be a part of Delaware EMS history by participating in the first Instructor Development Workshop at the DVFA EMS Continuing Education Conference!! Whether you attend both days or only one, there is something for every educator from the continuing education teacher to the primary paramedic educator.

DAY ONE has more in store for every educator, especially those who want to take their lessons to the next level. We'll examine how to connect with your audience in 50 minutes or less, how to improve your Power Point and media presentations, and even "practice what we preach" by having the audience participants give mini-presentations and be able to get feedback from their peers!!

DAY TWO is designed for anyone who teaches or coordinates psychomotor skill labs, including clinical and field responders. We'll discover new techniques to ensure maximum learning and retention, examine what true clinical competence means, get a handle on what to do when students are not "getting it" and look at methods to coach and motivate students for success!!

DAY ONE AGENDA:

- POWER POINT DESIGN
- CONNECTING WITH YOUR AUDIENCE IN 50 MINUTES OR LESS
- THE RESPONSIVE CLASSROOM: INTERACTIVITY & FACILITATION
- MOVIES THAT TEACH
- PRACTICE WHAT YOU PREACH: POLISHING THE STONE OF THE ORDER

DAY TWO AGENDA:

- EXPERIENTIAL EDUCATION & REALITY BASED TRAINING
- HUMAN PERFORMANCE EVALUATION & REMEDIATION
- WHAT IS CLINICAL COMPETENCE & HOW TO MEASURE IT
- BAD NEWS DOESN'T GET BETTER WITH AGE: COUNSELING & FEEDBACK
- PRECEPTOR BEST PRACTICES

- **Payment is required at time of registration.**
- **Registration forms and payment must be received no later than Friday August 14, 2009.**
- **No registrations or payments will be accepted after Friday August 14, 2009.**
- **Participants will be refused admission if payment is not received by the above listed deadline. Payments will NOT be accepted at any time during the conference.**
- **Registration fees are non-refundable.**
- **WALK IN PARTICIPANTS WILL NOT BE ADMITTED.**

Make checks payable to DVFA 2009 EMS Conference and submit with the Registration Form to:

**DVFA – 2009 EMS Conference
P.O. Box 1849
Dover, DE 19903-1849**

Please complete the seminar Registration Form for those attending the program and include payment when returning the form.

2009 DVFA Conference



Delaware State Ambulance Association EMS Continuing Education Beyond the Basics Seminar

Registration daily from 8:00-9:00, classes from 9:00-4:30
September 12 & 13, 2009 at the Delaware State Fire School, Kent County, Dover

The DVFA Conference Committee, in partnership with the Delaware State Ambulance Association and the Office of EMS, will be providing a two day continuing education training class for EMS providers.

This 16 hour course is designed to give the EMT-B a renewed appreciation for BLS care and skills, coupled with new information on the most recent innovations in pre hospital and emergency care. The session covers: assessment, trauma, cardiac emergencies, medical emergencies and much more. Participants will also gain a better understanding of anatomy, physiology, and pathophysiology as they relate to pre hospital care. The course includes a combination of lecture and hands on practice and much more!!!!

- **Class size is limited to 100 participants, first received, first registered**
- **\$130.00 for in state participants**
- **\$170.00 for out of state participants**
- **Lunch will be provided**

Each participant will be required to complete a registration form during the daily seminars for accurate record keeping. Participants are **required** to attend both days of this seminar in order to receive continuing education credit. Those leaving any session early or not attending will **not** receive continuing education credits.

- **Payment is required at time of registration.**
- **Registration forms and payment must be received no later than Friday August 14, 2009.**
- **No registrations or payments will be accepted after Friday August 14, 2009.**
- **Participants will be refused admission if payment is not received by the above listed deadline.**
- **Payments will NOT be accepted at any time during the conference.**
- **Registration fees are non-refundable.**
- **WALK IN PARTICIPANTS WILL NOT BE ADMITTED.**

Make checks payable to DVFA 2009 EMS Conference and submit with the Registration Form to:

DVFA – 2009 EMS Conference
P.O. Box 1849
Dover, DE 19903-1849

Please complete the Beyond the Basics Seminar Registration Form for those attending the two day program and include payment when returning the form.

2009 DVFA Conference



**Delaware State Ambulance Association
EMS Continuing Education
Emergency Pediatric Care (EPC)
Registration from 8:00-9:00, class from 9:00 till 4:45
Sunday Sept. 13, 2009 at the Delaware State Fire School, Dover, Delaware**

The DVFA Conference Committee, in partnership with the Delaware State Ambulance Association, NAEMT, and the Office of EMS, will be providing a hybrid continuing education training class for EMS providers.

This 16-hour hybrid course (8 hrs on line and 8 hrs class room) gives each provider/student the ability to integrate the knowledge presented into a practical format for use in his or her current practice. The following are the goals of this course:

- Allow the provider to integrate pathophysiology with the assessment findings in the pediatric patient.
- Improve the provider's ability to conduct a competent assessment of the pediatric patient that utilizes understanding of the developmental considerations, proper diagnostic skills, critical thinking, and interventions.
- Decide between those conditions that require emergent or urgent pre-hospital intervention and those that merely require transport to a hospital.
- Enhance the provider's ability to utilize problem-solving strategies in interventions and management alternatives.
- Improve the provider's overall comfort level in dealing with sick and injured children.

This course will be presented as a hybrid course. Registered students will receive an online log in to the course and complete the typical classroom portion online prior to the conference. A completion form must be brought with the participant to the day of the course to gain entry. Testing and practical station will take place at the conference.

- **Class size is limited to 40 participants, first received, first registered**
- **\$65.00 for in state participants**
- **\$75.00 out of state participants**
- **Lunch will be provided**

Each participant will be required to complete a registration form during the daily seminars for accurate record keeping.

Participants are required to complete the online portion prior to attending the course.

Participants who fail to complete the online requirement by September 1, 2009 will not be permitted to attend the classroom session on September 13, 2009.

Those leaving any session early or not attending will **not** receive continuing education credits.

- **Payment is required at time of registration.**
- **Registration forms and payment must be received no later than Friday August 14, 2009.**
- **No registrations or payments will be accepted after Friday August 14, 2009.**
- **Participants will be refused admission if payment is not received by the above listed deadline.**
- **Payments will NOT be accepted at any time during the conference.**
- **Registration fees are non-refundable.**
- **WALK IN PARTICIPANTS WILL NOT BE ADMITTED.**

Make checks payable to DVFA 2009 EMS Conference and submit with the Registration Form to:

**DVFA – 2009 EMS Conference
P.O. Box 1849
Dover, DE 19903-1849**

Please complete the Emergency Pediatric Care registration for those participating and include payment when returning the form.

2009 DVFA Conference



Delaware State Ambulance Association EMS Continuing Education Seminars General Session

September 14, 15 & 16, 2009 – Sheraton Conference Center & Hotel, Dover, Delaware

The DVFA Conference Committee, in partnership with the Delaware State Ambulance Association and the Office of EMS, will be providing continuing education training classes for EMS providers.

- **\$65.00 per day for in state participants.**
- **\$75.00 per day for out of state participants.**
- **Continental breakfast and lunch are included.**

Each participant will be required to complete a registration form during the daily seminars for accurate record keeping. Participants are **required** to attend all daily sessions. Those leaving any session early or not attending will **not** receive continuing education credits.

- **Payment is required at time of registration.**
- **Registration forms and payment must be received no later than Friday August 14, 2009.**
- **No registrations or payments will be accepted after Friday August 14, 2009.**
- **Participants will be refused admission if payment is not received by the above listed deadline. Payments will NOT be accepted at any time during the conference.**
- **Registration fees are non-refundable.**
- **WALK IN PARTICIPANTS WILL NOT BE ADMITTED.**

All general session classes are open for you to attend daily, please refer to our agenda for the topic you are going to attend and refer to the room letter for the class room. YOU MUST SIGN ONE OF THE DSFS REGISTRATION FORMS TO RECEIVE CREDIT FOR THE CLASS YOU ARE ATTENDING.

Make checks payable to DVFA 2009 EMS Conference and submit with the Registration Form to:

**DVFA – 2009 EMS Conference
P.O. Box 1849
Dover, DE 19903-1849**

Please complete the General Sessions Registration Form for those attending the 3 day general session programs and include payment when returning the form.